



**acoustica**<sup>®</sup>  
the quiet Australian

IMPACT

# AngelStep<sup>®</sup>

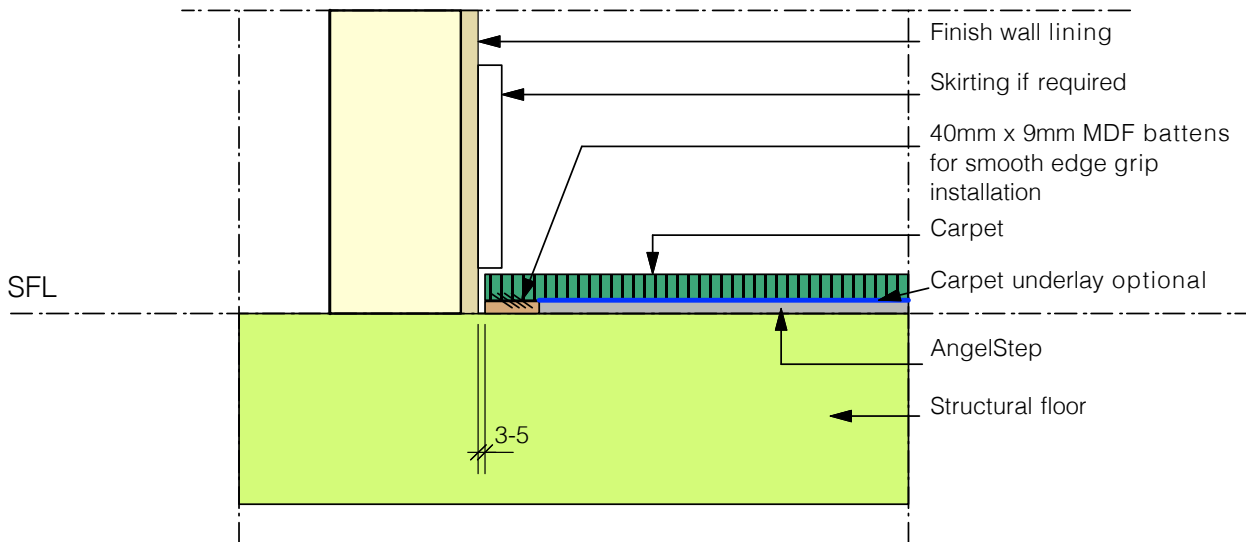
acoustic underlay



[acoustica.com.au](http://acoustica.com.au)

# ANGELSTEP INSTALLATION INSTRUCTIONS

- 1- **CARPET -  
ASI CPT DG01** AngelStep installation instructions for carpet finish
  
- 2- **TIMBER FLOOR -  
ASI YT TGF DG02 ASI  
ELF DG03** AngelStep installation instructions for Tongue & groove timber floor  
AngelStep installation instructions for Engineered or  
Laminate timber floor
  
- 3- **VINYL FLOOR -  
ASI CFC VLF DG04 ASI  
CS VF DG05  
ASI YT VLF DG06** AngelStep installation instructions on compressed fibrous cement  
floating floor for Vinyl or Laminate floor finish  
AngelStep installation instructions on cement screed  
for Vinyl floor finish  
AngelStep installation instructions on yellow tongue  
for Vinyl or Laminate floor finish
  
- 4- **TILES -  
ASI CFC VF DG07  
ASI CS VF DG08** AngelStep installation instructions with compressed fibrous cement  
floating for floor Tile finish  
AngelStep installation instructions with cement screed  
for floor Tile finish
  
- 5- **POLISHED CONCRETE  
-  
ASI CS PC DG09** AngelStep installation instructions with cement screed  
to be Polished
  
- 6- **TERRAZZO -  
ASI CS TRF DG10** AngelStep installation instructions for cement screed  
for floor Terrazzo finish
  
- 7- **PARQUETRY -  
ASI FC/YT PFDG 11** AngelStep installation instructions for yellow tongue or / compressed  
fibrous cement for Parquetry



001  
CPT1

## SECTION

Acoustic flooring treatment  
AngelStep installation - Carpet

AngelStep (AS) product comes in 4mm, 8mm, 10mm thickness.  
Choice of AngelStep varies subject to:

- floor structure, floor span, type of materials
- floor thickness, density
- acoustic tests

Acoustic performance of floors will vary with above parameters

### ANGELSTEP INSTALLATION

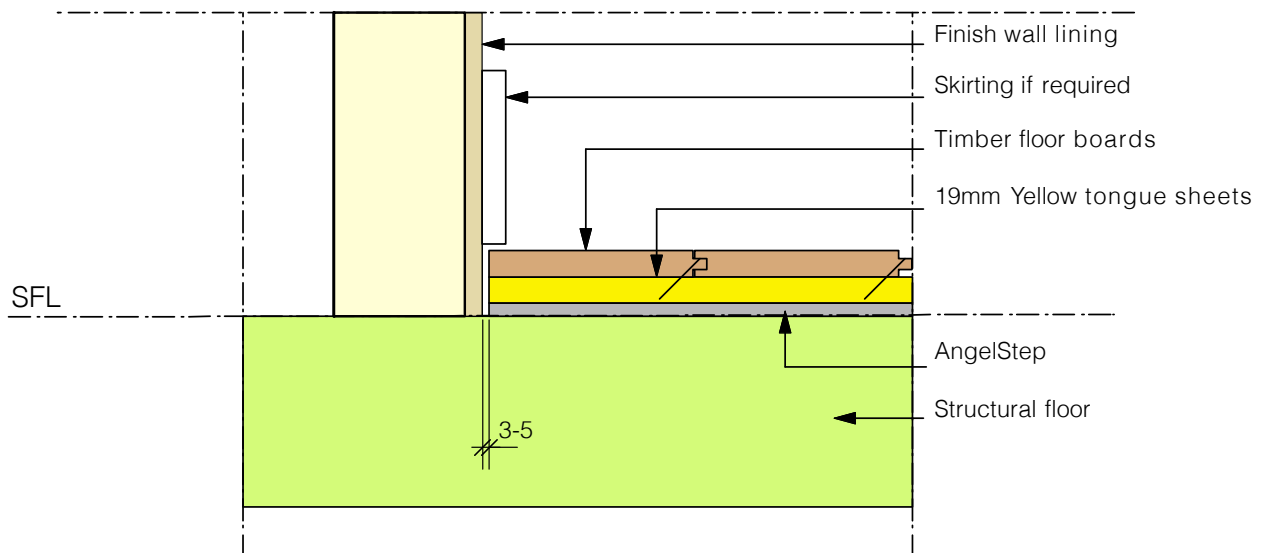
#### Carpet installation.

- Ensure the concrete slab is flat with no more than +/-3mm deviation in a 3m radius as per Australian standard AS3600:2001: Concrete structures. Deviations to the surface greater than 3mm over 3m are to be filled with a self leveling compound following manufacturers recommendations, or ground down to conform to the aforementioned specification.
- Floor to be clean and free of debris.
- Fix any squeak in timber floor if necessary.
- Install 40mm x (AS thickness - 1mm), MDF battens around the perimeter of room for smooth edge grip installation.
- Install AngelStep butted together. Joins may be taped using aluminum tape if necessary to ensure zero gaps between sheets.
- Spot glue AngelStep using a polyurethane based flooring/construction adhesive e.g Bostik Ultraset SF, Sika T-55J, Mapei Ultrabond P990 or equivalent.
- Leave 3-5mm gap between walls and finished surface.
- It is preferable to install skirting after floor has been installed. Leave a 3mm gap between floor finish and skirting.
- Install carpet as per AS standard and manufacturers recommendations.
- Use a Stanley knife or equal to cut AngelStep product.

**Note: Do not mechanically fix through AngelStep or use Modified Silicone Polymer adhesives**

ANGELSTEP INSTALLATION - CARPET FINISH

ASI CPT DG01



001  
TGF2

## SECTION

Acoustic flooring treatment

### AngelStep installation - Tongue & groove solid timber floor

AngelStep product comes in 4mm, 8mm, 10mm thickness

Choice of AngelStep varies subject to:

- floor structure, floor span, type of materials
- floor thickness, density
- acoustic tests

Acoustic performance of floors will vary subject to above parameters

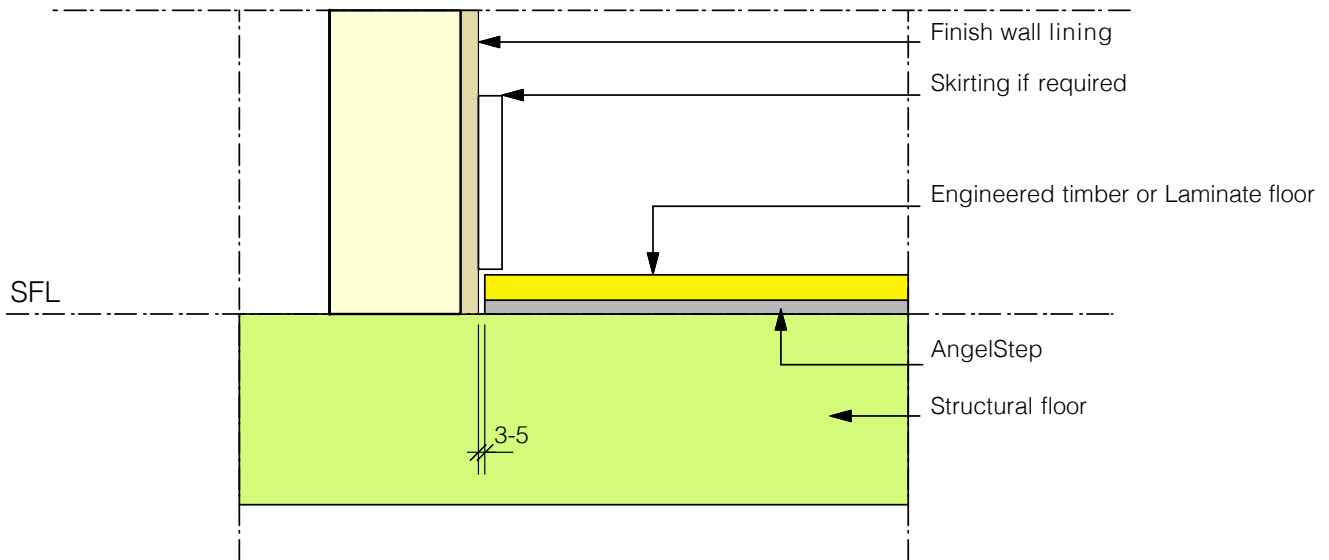
### ANGELSTEP INSTALLATION

#### Yellow tongue as substrate for Tongue and groove solid timber floor.

- Ensure the concrete slab is flat with no more than +/-3mm deviation in a 3m radius as per Australian standard AS3600:2001: Concrete structures. Deviations to the surface greater than 3mm over 3m are to be filled with a self leveling compound following manufacturers recommendations, or ground down to conform to the aforementioned specification.
- Floor to be clean and free of debris.
- Install AngelStep butted together. Joins may be taped using aluminum tape if necessary to ensure zero gaps between sheets.
- Spot glue AngelStep using a polyurethane based flooring/construction adhesive e.g Bostik Ultraset SF, Sika T-55J, Mapei Ultrabond P990 or equivalent.
- If full direct stick/bond is required for AngeStep to sub-floor and AngelStep to finished flooring, a polyurethane based flooring/construction adhesive such as Bostik Ultraset SF, Sika T-55J, Mapei Ultrabond P990 or equivalent can be used when notch troweling.
- Leave 3-5mm gap between walls and finished surface.
- Install yellow tongue directly onto AngelStep.
- Install timber floor as per AS standard and manufacturers recommendations. Fix boards to yellow tongue only.
- It is preferable to install skirting after floor has been installed. Leave a 3mm gap between floor finish and skirting.
- Use a Stanley knife or equal to cut AngelStep product.

**Note: Do not mechanically fix through AngelStep or use Modified Silicone Polymer adhesives**

ANGELSTEP INSTALLATION - YELLOW TONGUE - TIMBER FLOOR ASI YT TGF DG02



001  
EF03

## SECTION

### Acoustic flooring treatment AngelStep installation - Engineered timber or Laminate floor

AngelStep product comes in 4mm, 8mm, 10mm thickness

Choice of AngelStep varies subject to:

- floor structure, floor span, type of materials,
- floor thickness, density
- acoustic tests

Acoustic performance of floors will vary with above parameters

#### ANGELSTEP INSTALLATION

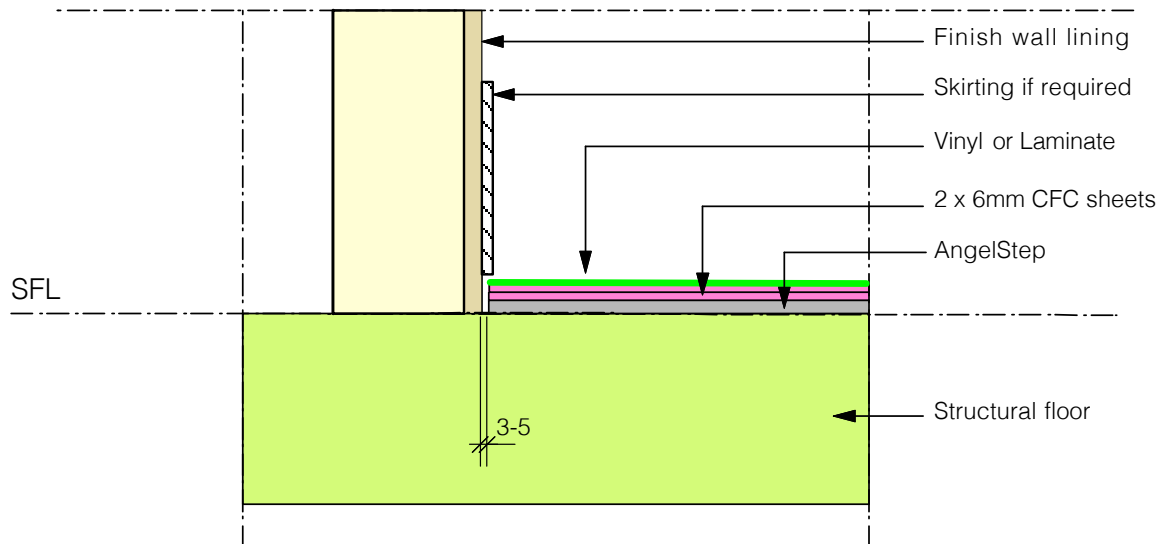
##### Floating Engineered or Laminate.

- Ensure the concrete slab is flat with no more than +/-3mm deviation in a 3m radius as per Australian standard AS3600:2001: Concrete structures. Deviations to the surface greater than 3mm over 3m are to be filled with a self leveling compound following manufacturers recommendations, or ground down to conform to the aforementioned specification.
- Floor to be clean and free of debris.
- Install AngelStep butted together. Joins may be taped using aluminum tape if necessary to ensure zero gaps between sheets.
- Spot glue AngelStep using a polyurethane based flooring/construction adhesive e.g Bostik Ultraset SF, Sika T-55J, Mapei Ultrabond P990 or equivalent.
- If full direct stick/bond is required for AngeStep to sub-floor and AngelStep to finished flooring, a polyurethane based flooring/construction adhesive such as Bostik Ultraset SF, Sika T-55J, Mapei Ultrabond P990 or equivalent can be used when notch troweling.
- Leave 3-5mm gap between walls and finished surface.
- Install timber floor as per AS standard and manufacturers recommendations.
- It is preferable to install skirting to wall only after floor has been installed. Leave a 3mm gap between floor finish and skirting.
- Use a Stanley knife or equal to cut product.

**Note: Do not mechanically fix through AngelStep or use Modified Silicone Polymer adhesives**

ANGELSTEP INSTALLATION - ENGINEERED TIMBER FLOOR

ASI ELF DG03



001 SECTION  
VF04 Acoustic flooring treatment  
**AngelStep installation - Vinyl or Laminate finish**

AngelStep product comes in 4mm, 8mm, 10mm thickness

Choice of AngelStep varies subject to:

- floor structure, floor span, type of materials,
- floor thickness, density
- acoustic tests

Acoustic performance of floors will vary with above parameters

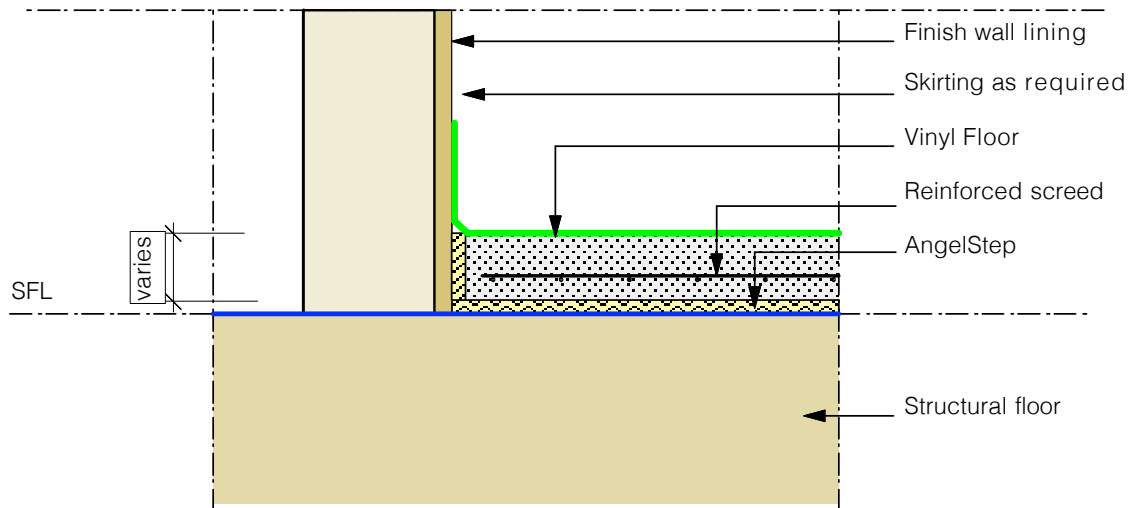
**ANGELSTEP INSTALLATION**

**Floating floor using Compressed Fibrous Cement(CFC) as substrate for vinyl or Laminate installation.**

- Ensure the concrete slab is flat with no more than +/-3mm deviation in a 3m radius as per Australian standard AS3600:2001: Concrete structures. Deviations to the surface greater than 3mm over 3m are to be filled with a self leveling compound following manufacturers recommendations, or ground down to conform to the aforementioned specification.
- Floor to be clean and free of debris.
- Install AngelStep butted together. Joints may be taped using aluminum tape if necessary to ensure zero gaps between sheets.
- Spot glue AngelStep using a polyurethane based flooring/construction adhesive e.g Bostik Ultraset SF, Sika T-55J, Mapei Ultrabond P990 or equivalent.
- Leave 3-5mm gap between walls and finished surface.
- Spot glue the first layer of CFC to Angel Step.
- Glue the 2nd layer of CFC together with manufacturer's recommended glue. (contact)
- Do not line up CFC joints, cross-hatch and overlap joints to form a floating floor.
- If full direct stick/bond is required for AngeStep to sub-floor and AngelStep to finished flooring, a polyurethane based flooring/construction adhesive such as Bostik Ultraset SF, Sika T-55J, Mapei Ultrabond P990 or equivalent can be used when notch troweling.
- Install vinyl or laminate as per AS standard and manufacturers recommendations.
- It is preferable to install skirting to wall only after floor has been installed. Leave a 3mm gap between floor finish and skirting.
- Use a Stanley knife or equal to cut product.

**Note: Do not mechanically fix through AngelStep or use Modified Silicone Polymer adhesives**

ANGELSTEP INSTALLATION - CFC SUBSTRATE FOR VINYL FINISH ASI CFC VLF DG04



001 SECTION  
VF05 Acoustic flooring treatment  
AngelStep installation - Vinyl finish

AngelStep product comes in 4mm, 8mm, 10mm thickness  
Choice of AngelStep varies subject to:

- floor structure, floor span, type of materials,
  - floor thickness, density
  - acoustic tests
- Acoustic performance of floors will vary with above parameters

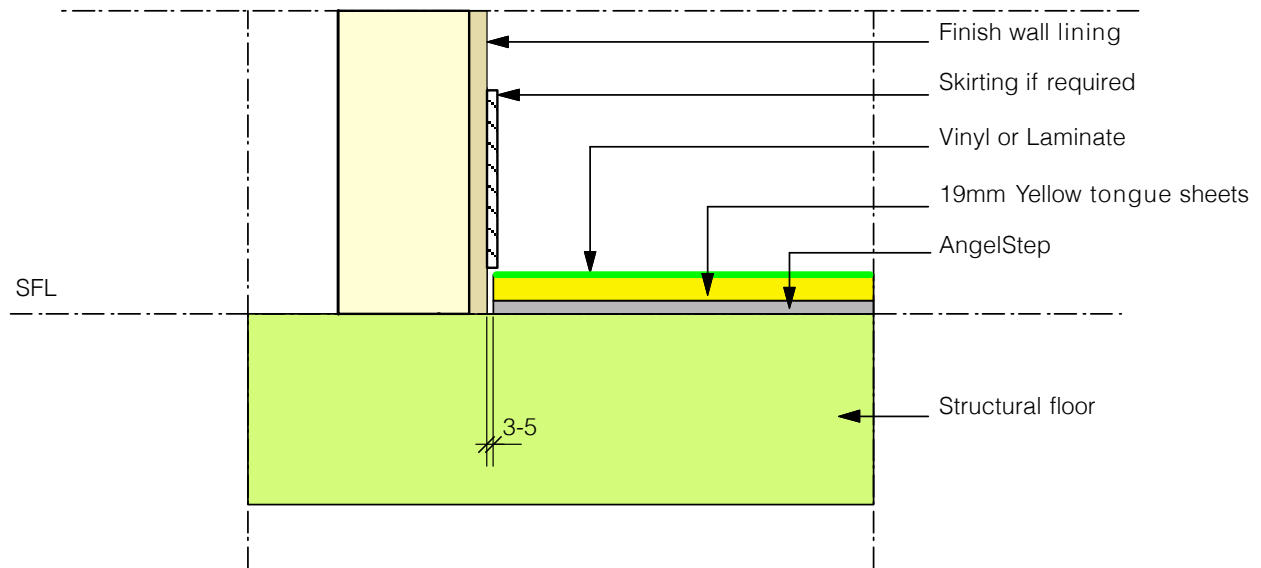
#### ANGELSTEP INSTALLATION

##### Reinforced Screed Floating floor for vinyl installation.

- Ensure the concrete slab is flat with no more than +/-3mm deviation in a 3m radius as per Australian standard AS3600:2001: Concrete structures. Deviations to the surface greater than 3mm over 3m are to be filled with a self leveling compound following manufacturers recommendations, or ground down to conform to the aforementioned specification.
  - Floor to be clean and free of debris.
  - Install AngelStep butted together. Joins may be taped using aluminum tape if necessary to ensure zero gaps between sheets.
  - Spot glue AngelStep using a polyurethane based flooring/construction adhesive such as Bostik Ultraset SF, Sika T-55J, Mapei Ultrabond P990 or equivalent.
  - Install AngelStep strips around perimeter edges to contain screed.
  - Tape at butted joints to avoid screed leakage
  - Pour cement reinforced screed as per AS Standards
  - Install vinyl as per AS standard and manufacturers recommendations.
- Use a Stanley knife or equal to cut product.

**Note: Do not mechanically fix through AngelStep or use Modified Silicone Polymer adhesives**

ANGELSTEP INSTALLATION - CONCRETE SCREED FOR VINYL FINISH ASI CS VF DG05



001 SECTION  
VF06 Acoustic flooring treatment  
**AngelStep installation - Vinyl or Laminate finish**

AngelStep product comes in 4mm, 8mm, 10mm thickness  
Choice of AngelStep varies subject to:

- floor structure, floor span, type of materials,
- floor thickness, density,
- acoustic tests

Acoustic performance of floors will vary with above parameters

#### ANGELSTEP INSTALLATION

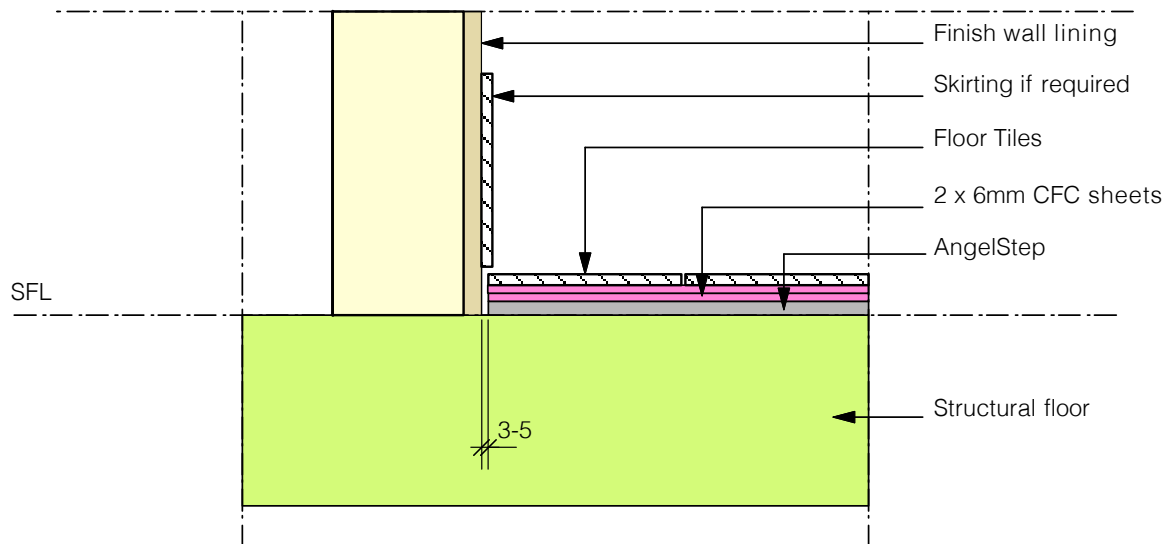
**Floating floor using Yellow tongue as substrate for vinyl or Laminate installation.**

- Ensure the concrete slab is flat with no more than +/-3mm deviation in a 3m radius as per Australian standard AS3600:2001: Concrete structures. Deviations to the surface greater than 3mm over 3m are to be filled with a self leveling compound following manufacturers recommendations, or ground down to conform to the aforementioned specification.
- Floor to be clean and free of debris.
- Fix any squeak in timber floor if necessary.
- Install AngelStep butted together. Joins may be taped using aluminum tape if necessary to ensure zero gaps between sheets.
- Leave 3-5mm gap between wall and finished surface.
- Spot glue AngelStep using a polyurethane based flooring/construction adhesive such as Bostik Ultraset SF, Sika T-55J, Mapei Ultrabond P990 or equivalent.
- Install yellow tongue directly onto AngelStep.
- If full direct stick/bond is required for AngeStep to sub-floor and AngelStep to finished flooring, a polyurethane based flooring/construction adhesive such as Bostik Ultraset SF, Sika T-55J, Mapei Ultrabond P990 or equivalent can be used when notch troweling.
- Install vinyl as per AS standard and manufacturers recommendations.
- It is preferable to install skirting to wall only after floor has been installed. Leave a 3mm gap between floor finish and skirting.
- Use a Stanley knife or equal to cut product.

**Note: Do not mechanically fix through AngelStep or use Modified Silicone Polymer adhesives**

ANGELSTEP INSTALLATION - YELLOW TONGUE FOR VINYL FINISH ASI YT VLF DG06





001  
TF07

## SECTION

Acoustic flooring treatment

### Tiles installation

AngelStep product comes in 4mm,8mm,10mm thickness  
Choice of AngelStep varies subject to:

- floor structure, floor span, type of materials,
- floor thickness, density
- acoustic tests

Acoustic performance of floors will vary with above parameters

### ANGELSTEP INSTALLATION

**Floating floor using Compressed Fibrous Cement as substrate for tiling installation.**

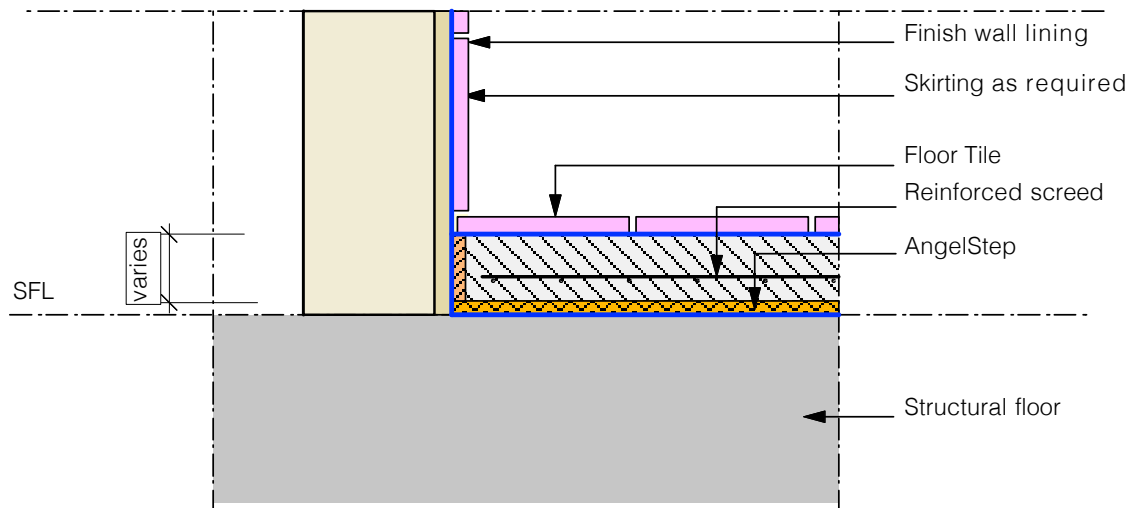
- Ensure the concrete slab is flat with no more than +/-3mm deviation in a 3m radius as per Australian standard AS3600:2001: Concrete structures. Deviations to the surface greater than 3mm over 3m are to be filled with a self leveling compound following manufacturers recommendations, or ground down to conform to the aforementioned specification.
  - Floor to be clean and free of debris.
  - Install AngelStep butted together. Joins may be taped using aluminum tape if necessary to ensure zero gaps between sheets.
  - Leave 3-5mm gap between wall and finished surface.
  - Spot glue AngelStep using a polyurethane based flooring/construction adhesive such as Bostik Ultraset SF, Sika T-55J, Mapei Ultrabond P990 or equivalent.
  - Spot glue the first layer of CFC to Angel Step.
  - Glue the 2nd layer of CFC together with manufacturer's recommended glue.
- (Contact)
- Do not line up CFC joints, cross-hatch and overlap joints to form a floating floor .
  - Install tiles as per AS Standards and manufacturers instructions.
  - It is preferable to install skirting after floor has been installed. Leave a 3mm gap between floor tiles and skirting.

- Use a Stanley knife or equal to cut product.

**Note: Do not mechanically fix through AngelStep or use Modified Silicone Polymer adhesives**

ANGELSTEP INSTALLATION ON CFC FOR TILING FINISH

ASI CFC TF DG07



001  
TF02

## SECTION

### Acoustic flooring treatment AngelStep installation - Tiled finish

AngelStep product comes in 4mm, 8mm, 10mm thickness  
Choice of AngelStep varies subject to:

- floor structure, floor span, type of materials,
- floor thickness, density
- acoustic tests

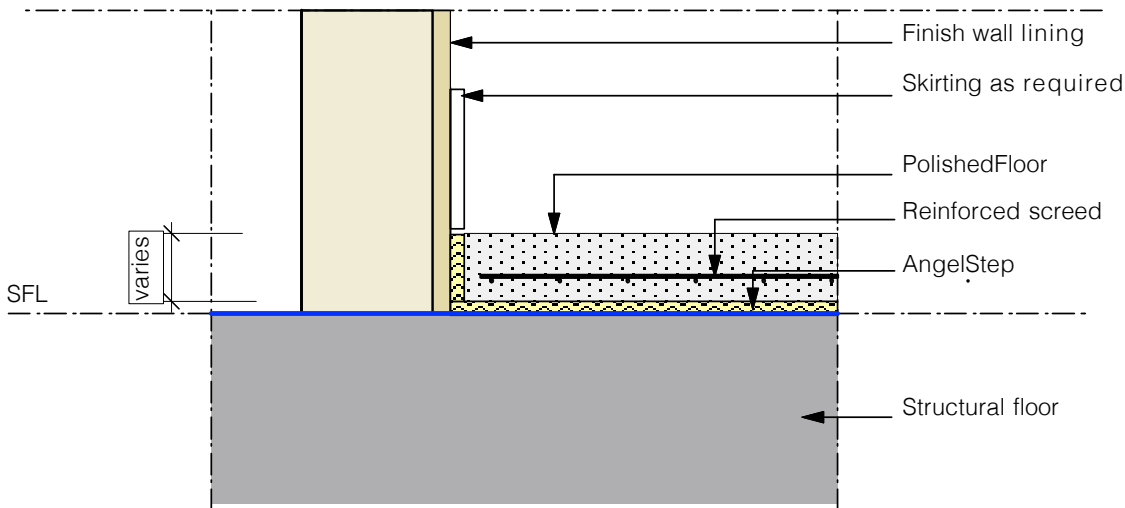
Acoustic performance of floors will vary with above parameters

#### ANGELSTEP INSTALLATION

##### Reinforced Screed Floating floor for tiles installation.

- Ensure the concrete slab is flat with no more than +/-3mm deviation in a 3m radius as per Australian standard AS3600:2001: Concrete structures. Deviations to the surface greater than 3mm over 3m are to be filled with a self leveling compound following manufacturers recommendations, or ground down to conform to the aforementioned specification.
- Floor to be clean and free of debris.
- Install waterproof membrane if in bathroom.(shown as blue line in above drawing).
- Install AngelStep butted together. Joints may be taped using aluminum tape if necessary to ensure zero gaps between sheets.
- Install AngelStep strips around the room edges to contain screed.
- Tape at butted joints to avoid screed leakage.
- Spot glue AngelStep using a polyurethane based flooring/construction adhesive such as Bostik Ultraset SF, Sika T-55J, Mapei Ultrabond P990 or equivalent.
- Pour cement reinforced screed as per AS Standards.
- Install tiles as per AS standard and manufacturers recommendations.
- Use a Stanley knife or equal to cut product.

**Note: Do not mechanically fix through AngelStep or use Modified Silicone Polymer adhesives**



001  
PC09

## SECTION

### Acoustic flooring treatment AngelStep installation - Polished floor finish

AngelStep product comes in 4mm, 8mm, 10mm thickness  
Choice of AngelStep varies subject to:

- floor structure, floor span, type of materials,
- floor thickness, density,
- acoustic tests

Acoustic performance of floors will vary with above parameters

#### ANGELSTEP INSTALLATION

##### Reinforced Screed Floating Polished floor finish

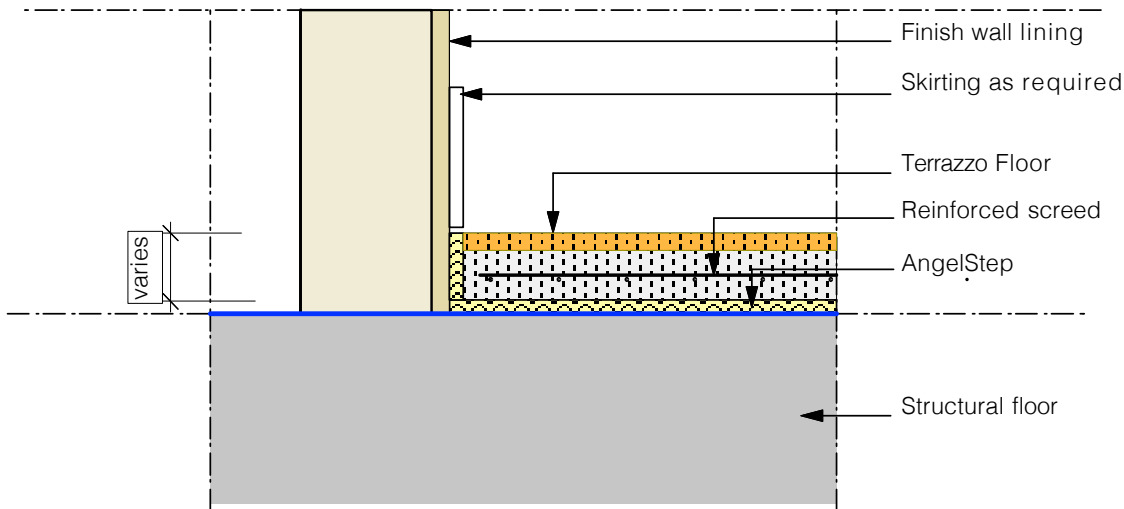
- Ensure the concrete slab is flat with no more than +/-3mm deviation in a 3m radius as per Australian standard AS3600:2001: Concrete structures. Deviations to the surface greater than 3mm over 3m are to be filled with a self leveling compound following manufacturers recommendations, or ground down to conform to the aforementioned specification.
- Floor to be clean and free of debris.
- Install AngelStep butted together. Joints may be taped using aluminum tape if necessary to ensure zero gaps between sheets.
- Install AngelStep strips around the room edges to contain screed.
- Tape at butted joints to avoid screed leakage
- Spot glue AngelStep using a polyurethane based flooring/construction adhesive such as Bostik Ultraset SF, Sika T-55J, Mapei Ultrabond P990 or equivalent.
- Pour cement reinforced screed as per AS Standards
- Polish floor as per AS standard.
- Use a Stanley knife or equal to cut product.

**Note: Do not mechanically fix through AngelStep or use Modified Silicone Polymer adhesives**

ANGELSTEP INSTALLATION - CONCRETE SCREED POLISHED FINISH ASI CS PC DG09

25 Plasser Crescent, North St Marys, NSW, 2760. Tel 02 95502900.

[www.acoustica.com.au](http://www.acoustica.com.au)



001 SECTION  
TRF10 Acoustic flooring treatment  
**AngelStep installation - Terrazzo floor finish**

AngelStep product comes in 4mm, 8mm, 10mm thickness  
Choice of AngelStep varies subject to:

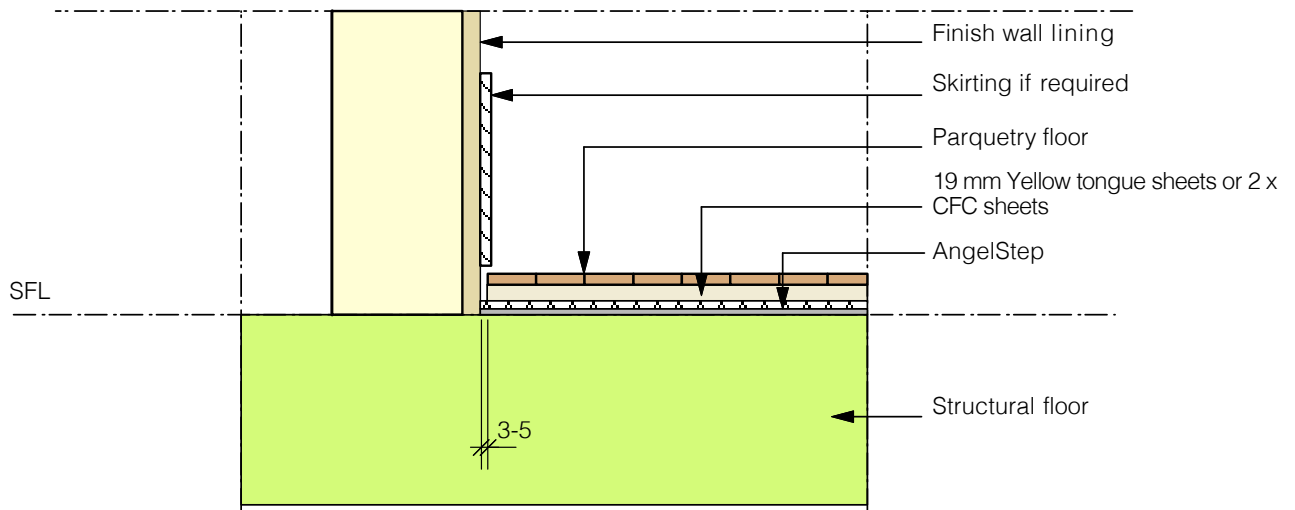
- floor structure, floor span, type of materials,
- floor thickness, density,
- acoustic tests

Acoustic performance of floors will vary with above parameters

**ANGELSTEP INSTALLATION**  
**Reinforced Screed Floating terrazzo floor finish**

- Ensure the concrete slab is flat with no more than +/-3mm deviation in a 3m radius as per Australian standard AS3600:2001: Concrete structures. Deviations to the surface greater than 3mm over 3m are to be filled with a self leveling compound following manufacturers recommendations, or ground down to conform to the aforementioned specification.
- Floor to be clean and free of debris.
- Install AngelStep butted together. Joins may be taped using aluminum tape if necessary to ensure zero gaps between sheets.
- Install AngelStep strips around the edges to contain screed.
- Tape at butted joints to avoid screed leakage
- Spot glue AngelStep using a polyurethane based flooring/construction adhesive such as Bostik Ultraset SF, Sika T-55J, Mapei Ultrabond P990 or equivalent.
- Pour cement reinforced screed as per AS Standards
- Install terrazzo floor as per AS standard. (screed thickness and terrazzo finish vary in accordance with installers specifications and recommendations.)
- Use a Stanley knife or equal to cut product.

**Note: Do not mechanically fix through AngelStep or use Modified Silicone Polymer adhesives**



001

## SECTION

### Acoustic Flooring treatment Parquetry installation

AngelStep product comes in 4mm, 8mm, 10mm thickness  
Choice of AngelStep varies subject to:

- floor structure, floor span, type of materials,
- floor thickness, density
- acoustic tests

Acoustic performance of floors will vary with above parameters

### ANGELSTEP INSTALLATION

#### Parquetry floor

- Ensure the concrete slab is flat with no more than +/-3mm deviation in a 3m radius as per Australian standard AS3600:2001: Concrete structures. Deviations to the surface greater than 3mm over 3m are to be filled with a self leveling compound following manufacturers recommendations, or ground down to conform to the aforementioned specification.
- Floor to be clean and free of debris.
- Install AngelStep butted together. Joins may be taped using aluminum tape if necessary to ensure zero gaps between sheets.
- Leave 3-5mm gap between wall and finished surface.
- Spot glue AngelStep using a polyurethane based flooring/construction adhesive such as Bostik Ultraset SF, Sika T-55J, Mapei Ultrabond P990 or equivalent.
- Spot glue the first layer of CFC to Angel Step.
- Spot glue the 2nd layer of CFC together.
- Do not line up CFC joints, cross-hatch and overlap joints to form a floating floor.

#### OR ALTERNATIVELY

- Spot glue 19mm yellow tongue construction flooring directly to the AngelStep using a polyurethane based flooring/construction adhesive such as Bostik Ultraset SF, Sika T-55J, Mapei Ultrabond P990 or equivalent.
- If full direct stick/bond is required for AngeStep to sub-floor and AngelStep to finished flooring, a polyurethane based flooring/construction adhesive such as Bostik Ultraset SF, Sika T-55J, Mapei Ultrabond P990 or equivalent can be used when notch troweling.
- Install floor blocks as per AS Standards and manufacturers instructions.
- Install skirting after floor has been installed . Leave a 3mm gap between floor blocks and skirting.
- Use a Stanley knife or equal to cut product.

***Note: Do not mechanically fix through AngelStep or use Modified Silicone Polymer adhesives***

ANGELSTEP INSTALLATION ON PLY FOR PARQUETRY FLOORING

ASI FC/YT PFDG11

25 Plasser Crescent, North St Marys, NSW, 2760. Tel 02 95502900.

[www.acoustica.com.au](http://www.acoustica.com.au)



**acoustica**<sup>®</sup>  
the quiet Australian

IMPACT

# AngelStep<sup>®</sup>

acoustic underlay



[acoustica.com.au](http://acoustica.com.au)